

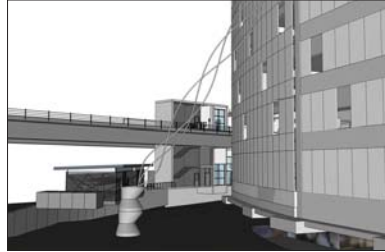
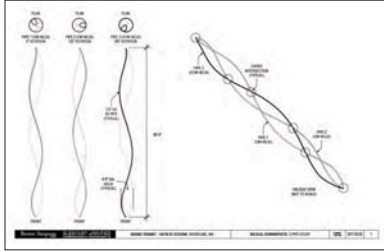
# Sound Transit Art Program

## NE 145th Station Artwork | Buster Simpson



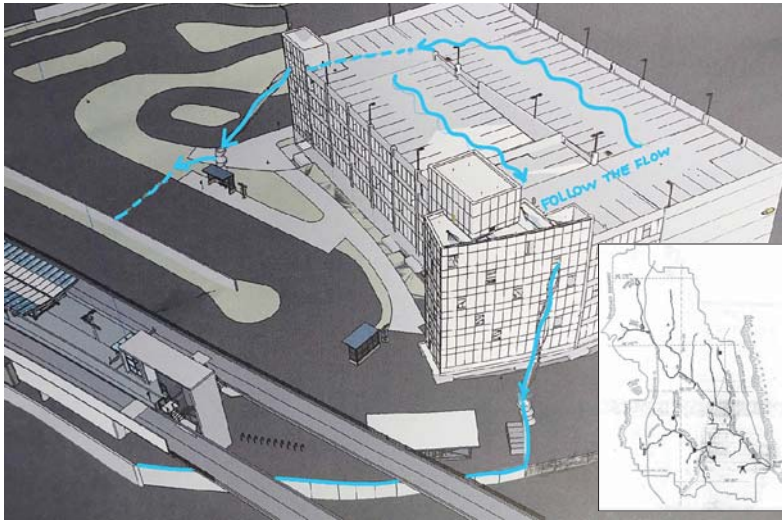
Local luminary Buster Simpson is developing two sculptures which he is calling "Helical Sine Wave Trusses." Simpson's projects for the station are a continuation of his long practice of exposing and celebrating institutional

infrastructure. He is particularly drawn to the way water is controlled and used in urban places. Related artwork can be in Seattle along Vine Street in the Belltown neighborhood, at the Brightwater Treatment Plant in Snohomish County and, within the next few years, along Seattle's Central Waterfront.

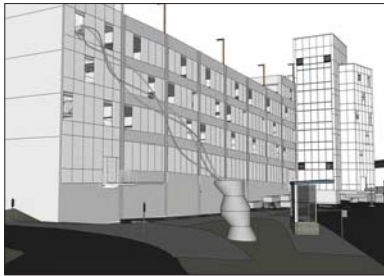


Simpson writes "the Helical Sine Wave Truss is a metaphoric sculptural conveyance storm water coming off the station garage's roof into a mitigating bog and moss landscape. The form's curving rivulets suggest the dynamics of the

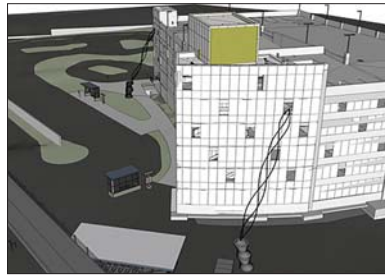
water's meander, making transparent, legible and instructive the respectful journey of water at this, one of the sources of Thornton Creek."



Concept sketch showing the movement of storm water from the station garage.



View of the west garage façade looking towards southeast.



View of the west and south garage façades looking NE.



Water Glass (2001)  
Seattle, Washington



Whole Flow (2009)  
Pasadena, California



Buckoning Cistern (2003)  
Seattle, Washington

Examples of the artist's past work related to this project at the NE 145th Station garage.

# Sound Transit Art Program NE 185th Station Artwork | Mary Lucking

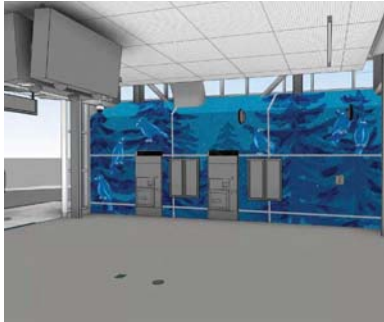


Arizona-based artist Mary Lucking is working on a series of murals and cut metal screens populated with images of imagined birds and plants. She thinks of the birds as stand-ins for the station's neighbors and writes "in some places, the birds are

hanging out in a group, like people waiting for a train. Their postures and gazes suggest that they are talkative, bored, shy, sleepy, curious or wistful – the emotions of the daily commute. Like real birds, they share our physical space, but experience it in a different way."



Lucking's inspiration comes from a variety of sources, including her exploration of local neighborhoods set amid tall trees, the forests of folktales and the notion of nests as a metaphor for home.



Concept sketch of mosaic technique on ticketing wall in south entrance.



Cut metal plant forms concept on south entrance building.



Detail of mosaic fabrication technique.



Concept sketch showing cut metal bird and plant forms on north entrance building.

