

# Tree Credit Table

(per minimum diameter – DBH)

DBH	Tree Credits	DBH	Tree Credits	DBH	Tree Credits
4 – 12"	1	25 – 26"	4.5	39 – 40"	8
13 – 14"	1.5	27 – 28"	5	41 – 42"	8.5
15 – 16"	2	29 – 30"	5.5	43 – 44"	9
17 – 18"	2.5	31 – 32"	6	45 – 46"	9.5
19 – 20"	3	33 – 34"	6.5	47" +	10
21 – 22"	3.5	35 – 36"	7		
23 – 24"	4	37 – 38"	7.5		

Example: A property with 7,200 sf area would have a requirement of 10 credits (7,200 SF(.165 ac.) x 60 cr. per acre = 10 credits). The credit requirement for this lot could be met with a 24-inch tree(4) and one 32-inch tree(6), or 10 replacement trees.



0 50 ft

### Existing Condition

- R6 zone
- ½ acre parcel – subdivide into 3 lots.
- All existing structures to be removed.
- Total 11 significant trees on site.



0 50 ft

**Based on current code**

- Remove 9 trees - retain 2 trees (20%).
- Replant 5 trees. (First 6 trees not counted)



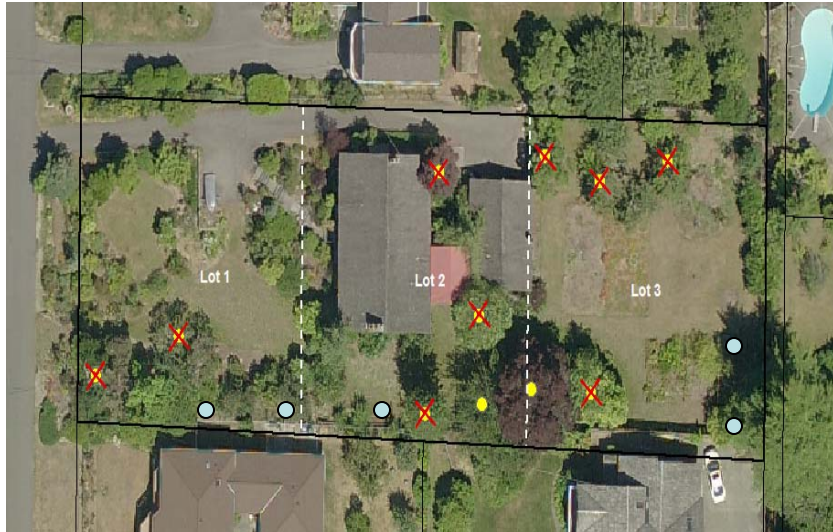


0 50 ft

**Based on proposed code**

- Remove 7 trees – due to perimeter trees.
- Based on 3 new 7,200 SF lots, 10 tree credits required per lot.
- Replant 9 replacement trees on Lot 1.
- Replant 8 replacement trees on Lot 2.
- Replant 6 replacement trees on Lot 3.

## Current



VS.

## Proposed



- Remove 9 trees.
- Replant 5 replacement trees.

- Remove 7 trees.
- Replant 23 replacement trees.
- No \$\$ contribution into tree account.